



2024-25 REPORT TO COLLEGES



'IOLANI SCHOOL

Founded in 1863, at the request of King Kamehameha IV and Queen Emma, 'Iolani has grown to become an internationally recognized independent, college-preparatory day and boarding school in Honolulu, Hawai'i related historically to the Episcopal Church.

Timothy R. Cottrell, Ph.D.
Head of School

Melanie K. Pflingsten
Associate Head of School &
Dean of Upper School Faculty

Michael Lomuscio, Ed.D.
Dean of Studies

Lori Yoneda
Dean of Students

Piyada A. Nonzee
Executive Director of College
Counseling
pnonzee@iolani.org

Todd R. Fleming
Director of College Counseling
Operations
tfleming@iolani.org

Leilani Arita-Takayama
Associate Director
ltakayama@iolani.org

Cullen Arroyo
Associate Director
carroyo@iolani.org

Scott Kominkiewicz
Associate Director
skominkiewicz@iolani.org

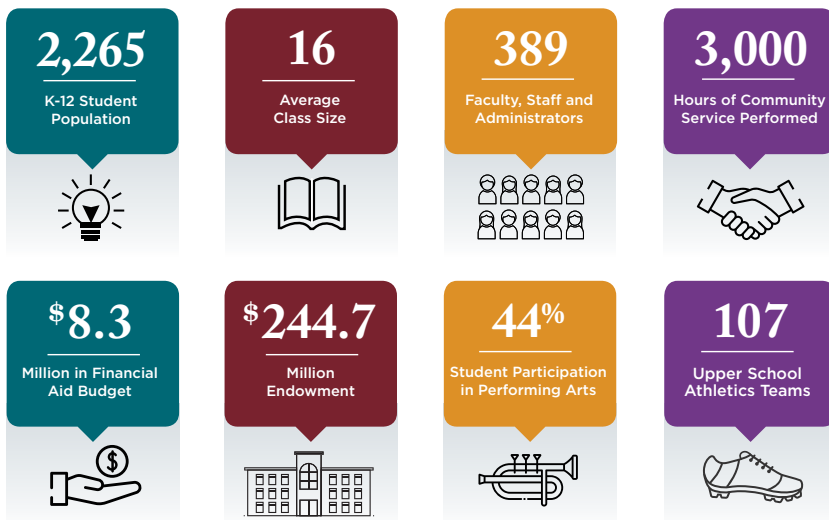
Berta Liao
Associate Director
bliao@iolani.org

Kori Shlachter
Associate Director
kshlachter@iolani.org

MISSION

'Iolani School is a college-preparatory school for grades K-12 founded upon Christian principles. Its mission is to develop liberally educated, well-rounded individuals who are well prepared for higher education and for responsible, moral citizenship.

SCHOOL AND COMMUNITY



- Accredited by the Western Association of Schools and Colleges

MARKING PROCEDURES

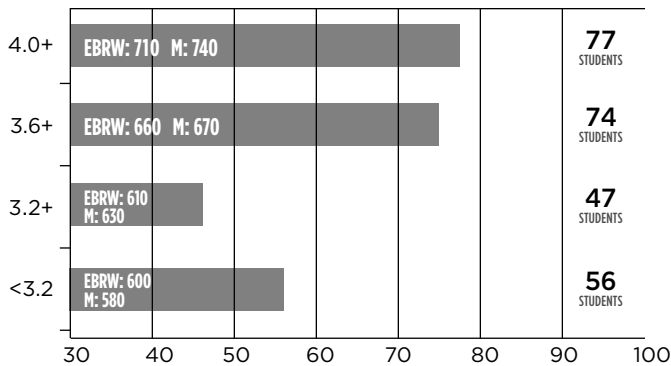
Numerical	Letter	Regular	Honors	A.P.
90-100	A	4.0	4.5	5.0
80-89	B	3.0	3.5	4.0
70-79	C	2.0	2.0	2.0
60-69	D	1.0	1.0	1.0
Below	E	0	0	0

GPA is calculated by converting to total points and dividing by total credits. As a school policy, 'Iolani does not provide numeric class rank.



Class of 2025 Profile: 254 Students

WEIGHTED GPA (Six Semesters) Distribution - Class of 2025
 - Median SATs for each cohort listed within the bar



NATIONAL MERIT SCHOLARSHIP COMPETITION

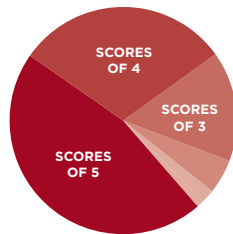
22 National Merit Semifinalists
 Out of a total of 74 in the State of Hawai'i

28 National Merit Commended Scholars

ADVANCED PLACEMENT PERFORMANCE

In 2024, 1,233 AP Examinations were written with:

- 47% earning scores of 5
- 31% earning scores of 4
- 16% earning scores of 3



PRESIDENTIAL SCHOLARS PROGRAM

In the last seven years, 'Iolani School has had:

96
Candidates

13
Semifinalists

7
Presidential Scholars

AP ENROLLMENT 2024-25

With the exception of Computer Science and U.S. History, junior year is the first year in which students may take AP courses. Juniors must petition to take more than 3 AP courses, while seniors must petition to take more than 4. 91% of the Class of 2025 is taking one or more AP courses as a senior. The enrollment below includes seniors, juniors, and sophomores.

Biology	59
Calculus AB	79
Calculus BC	58
Calculus Multivariable	8
Ordinary Differential Equations	8
Capstone: AP Research	11
Capstone: AP Seminar	14
Chemistry	25
Chinese Language & Culture	9
Computer Science Principles	64
English Literature	48
French Language & Culture	18
Government & Politics: Comparative	43
Government & Politics: US	96
History: European	16
History: US	118
Japanese Language & Culture	25
Latin	10
Macroeconomics	97
Microeconomics	97
Music Theory	15
Physics 1	89
Physics 2	23
Physics C E&M	20
Physics C Mech	20
Psychology	114
Spanish Language & Culture	6
Statistics	115
Studio Art: 3D Art & Design (Mixed Media)	2
Studio Art: 3D Design	6
Studio Art: Drawing	3

TOTAL:

1,316

‘IOLANI SCHOOL COURSE OFFERINGS FOR THE CLASS OF 2025

	GRADE 9	GRADE 10	GRADE 11	GRADE 12														
English (4 years required)	English 9	English 10	11th Grade Year Elective: British Literary Experience Semester Electives open to all in Grades 11 and 12. Full list of English Department electives can be found at: www.iolani.org/academics Year Electives open to all in Grades 11 and 12: AP Seminar	AP English Literature														
History (3 years required)	History of the Modern World	United States History AP United States History	Semester Electives open to all in Grades 11 and 12. Full list of History Department electives can be found at: www.iolani.org/academics Year Electives open to all in Grades 11 and 12: Asian Studies AP African American Studies AP European History	AP US Gov't & Politics AP Micro/Macro Economics														
Mathematics (3 years required, through Algebra 2)	Algebra 1A, 1B Geometry Geometry Honors	Algebra 2A Algebra 2B Algebra 2 Honors	Precalculus Accelerated Precalculus Precalculus Honors Math Electives: Statistics, Design Science, Math of Personal Finance, Math of Sports Analytics AP Level Electives: AP Statistics, Multivariable Calculus, Ordinary Differential Equations	Accelerated Precalculus Calculus AP Calculus AB AP Calculus BC														
Laboratory Science (3 years required)	Biology Biology Honors	Biology Chemistry Chemistry Honors	Physics AP Biology AP Chemistry AP Physics 1 Semester Electives open to all in Grades 11 and 12: Full list of Science Department electives can be found at: www.iolani.org/academics	AP Physics 2 AP Physics C: Electricity and Magnetism AP Physics C: Mechanics														
World Language (3 years required)	Students may begin language study in grade 7, 8, 9 or 10. The following courses are offered to those in 9-12. <table border="1" style="width: 100%; border-collapse: collapse;"> <thead> <tr> <th>Chinese</th> <th>French</th> <th>Hawaiian</th> <th>Japanese</th> <th>Korean</th> <th>Latin</th> <th>Spanish</th> </tr> </thead> <tbody> <tr> <td>1, 2, 3, 4 2H, 3H, 4H, 5H</td> <td>1, 2, 3, 2H, 3H, 5H</td> <td>1, 2, 3, 4 5H</td> <td>1, 2, 3, 4 2H, 3H, 4H, 5H</td> <td>1</td> <td>1, 2, 3 2H, 3H, 5H</td> <td>1, 2, 3, 4 2H, 3H, 5H</td> </tr> </tbody> </table> AP Language and Culture courses offered in Chinese, French, Japanese, Spanish; AP Latin				Chinese	French	Hawaiian	Japanese	Korean	Latin	Spanish	1, 2, 3, 4 2H, 3H, 4H, 5H	1, 2, 3, 2H, 3H, 5H	1, 2, 3, 4 5H	1, 2, 3, 4 2H, 3H, 4H, 5H	1	1, 2, 3 2H, 3H, 5H	1, 2, 3, 4 2H, 3H, 5H
Chinese	French	Hawaiian	Japanese	Korean	Latin	Spanish												
1, 2, 3, 4 2H, 3H, 4H, 5H	1, 2, 3, 2H, 3H, 5H	1, 2, 3, 4 5H	1, 2, 3, 4 2H, 3H, 4H, 5H	1	1, 2, 3 2H, 3H, 5H	1, 2, 3, 4 2H, 3H, 5H												
Visual Arts	Students may begin art study in any grade. The following courses are offered to those in grades 9-12. Ceramics 1-3, Design 3D 1-3, Drawing 1-3, Mixed Media 1-3, Painting 1-3, Photography 1-3, AP Studio Art: Drawing, AP Studio Art: 3D Design																	
Performing Arts	Students may begin performing arts study in any grade. The following courses are offered to those in grades 9-12. Chorus 1-2, Concert Band (Beginning, Intermediate, Marching, Concert, Symphonic, Wind Ensemble), Stage Band 1-3, Orchestra 1-5, Dance Jazz/Ballet 1-4, Dance Hula 1-4, Theater (Beginning, Int., Advanced), Musical Theatre 1-3, Music Theory, Song Writing, Hawaiian Music Ensemble																	
i (Innovation) Department	Computer Science: AP Computer Science Principles, Computer 1, Intro to Data Science, App Design & Development, Video Game Design 1-2 Design & Fabrication: Intro to Digital Design & Fabrication, Design & Fabrication 1-2 Media: Film Production, Graphic Design, Newsroom, Yearbook Robotics: Robotics 1-4 Leadership & Service Learning: Economics & Entrepreneurship, One Mile: Climate Change, Sustainable Earth: Population & Energy																	
Other	Religion: Bible (one semester required of all students) Physical Education: One quarter required in grade 9, two quarters each in grades 10 and 11 Extra-departmental: Psychology, AP Psychology AP Capstone: AP Research, AP Seminar																	

COLLEGE ATTENDANCE: FOUR YEAR HISTORY

Members of the Class of 2024 have enrolled at 104 colleges around the world. Over 98% are attending four-year colleges. 83% attend college in the continental U.S., 5% in other countries, and 10% in Hawai'i. The following is a list of schools with two or more matriculants from the 'Iolani Classes of 2021-2024. Schools in red bold have enrolled 4 or more students in that time, while schools marked with an asterisk note graduates from the Class of 2024.

American University*
Amherst College*
Arizona State University*
Azusa Pacific University
Babson College*
Bates College*
Baylor University*
Bentley University*
Boston College*
Boston University*
Bowdoin College
Brandeis University
Brigham Young University
Brown University*
Bryn Mawr College*
California Baptist University
California Lutheran University
California Polytechnic State University San Luis Obispo*
California State University, East Bay
California State University, Fullerton
California State University, Maritime Academy
California State University, Northridge
Carnegie Mellon University
Case Western Reserve University
Chapman University*
College of the Holy Cross*
College of the Sequoias
Colorado School of Mines*
Colorado State University*
Cornell University
Connecticut College*
Constructor University*
Creighton University*
Denison University
DePaul University*
Duke University*
Eastern Arizona College*
Embry-Riddle Aeronautical University
Emerson College
Emory University*
Fordham University
Fullerton College*
George Fox University*
George Washington University*
Georgetown University
Gonzaga University*
Grand Canyon University
Grinnell College
Harvard University*
Hawai'i Pacific University*
Hong Kong University*
IE University
Indiana University
International Christian University
Keio University
Lehigh University
Lewis & Clark College*
Loyola Marymount University*
Loyola University Chicago*
Macalester College*
Marist College
Massachusetts Institute of Technology
McGill University*
Michigan State University
New York University*
Nicholls State University*
Northeastern University*
Northwestern University*
Oberlin College
Occidental College*
Oregon Institute of Technology*
Oregon State University*
Pace University, New York City
Pacific Lutheran University
Pacific University*
Parsons School of Design at The New School
Pepperdine University
Point Loma Nazarene University
Pomona College
Portland State University*
Princeton University*
Purdue University*
Rhode Island School of Design*
Rice University*
Ritsumeikan University in Kyoto*
Rochester Institute of Technology*
Rutgers University
Saint Martin's University*
San Diego Miramar College*
San Diego State University*
Santa Clara University*
Sarah Lawrence College
Scripps College*
Seattle Pacific University
Seattle University*
Sophia University
Skidmore College*
Stanford University
Stevens Institute of Technology
St. John's College*
Suffolk University*
Swarthmore College
Syracuse University*
Temple University, Japan Campus*
Texas Christian University*
The Evergreen State College*
Tufts University*
Tulane University of Louisiana
United States Air Force Academy
United States Naval Academy*
University of Alberta*
University of Arizona*
University of British Columbia
University of California, Berkeley*
University of California, Davis*
University of California, Irvine*
University of California, Los Angeles*
University of California, San Diego
University of California, Santa Barbara*
University of Cambridge*
University of Chicago*
University of Denver
University of Edinburgh*
University of Hawai'i at Hilo
University of Hawai'i at Mānoa*
University of Illinois Urbana-Champaign*
University of La Verne
University of Melbourne*
University of Michigan*
University of Nebraska Omaha*
University of Nevada Reno*
University of Northern Colorado*
University of Notre Dame
University of Oregon*
University of Padova*
University of Pennsylvania*
University of Pittsburgh at Bradford*
University of Portland*
University of Puget Sound*
University of Redlands
University of Richmond*
University of Rochester*
University of San Diego*
University of San Francisco*
University of Southern California*
University of Texas at Dallas*
University of the Pacific*
University of Toronto
University of Utah*
University of Washington*
Vassar College
Villanova University*
Waseda University*
Washington University in St. Louis*
Wellesley College*
Westmont College*
Willamette University
Worcester Polytechnic Institute
Yale University
Yonsei University*
Zhejiang University*