

## Fwd: Campus Expansion Update

1 message

Timothy Cottrell <tcottrell@iolani.org>

Fri, Sep 22, 2017 at 10:38 AM

Bcc: facstaffk-12@iolani.org

September 22, 2017

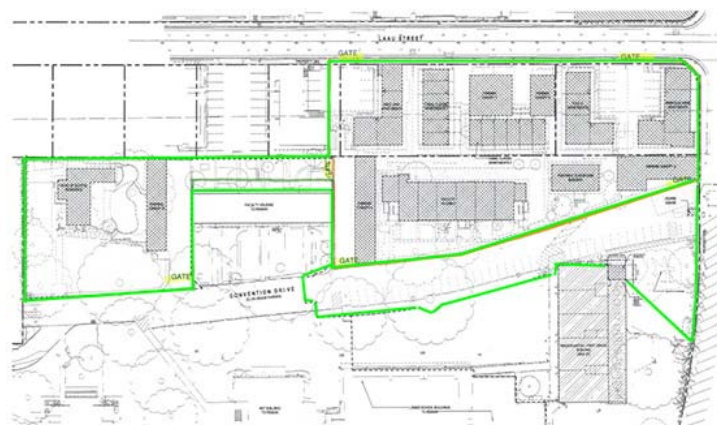
Dear Parents,

### Construction has begun

The first visible signs of the Campus Expansion began to appear with protective barriers being installed around the areas where the new K - 1 Community and Residential Hall will be built.



The below image shows an outline of the construction barrier. The exterior walls will be 12-foot plywood sheets (a year's worth of art projects) with interior chain link fences to further sequester the job sites. Moving forward, Convention drive will be restricted for construction and residents. At some point into the project, a pass through road from Convention Drive to Laau St. will be created and will be interior to the job site and then open for school use once construction is finished.



### Parent Coffee 9/12 Q & A and Future Parent Coffees

ʻOhana is sponsoring a series of parent coffees at which we present the Campus Expansion projects and answer questions. We had one on 9/12 with around 30 attendees and answered some great questions. I encourage you to attend one of the coffee chats if possible. You can register when announcements are made through the News and Links parent email. Here is the schedule:

- Friday, September 29, 2017, :30 - 8:30 am – Sullivan Center 3rd Floor
- Thursday, October 26, 2017, 7:30 - 8:30 am – Sullivan Center 4rd Floor
- Friday, January 19, 2018, 7:30 - 8:30 am – Sullivan Center 3rd Floor
- Friday, February 16, 2018, 7:30 - 8:30 am – Sullivan Center 3rd Floor

Here is a brief recap of the information shared and some of the Q&A. Before moving to the discussion, we showed the rendered fly-throughs of the projects. While not completely updated in every detail, these do show the designs quite well.

[Here is the K-1 Community and Lower School Labs and Studios](#)

[Here is the Residence Hall](#)

The following Q&A reflects the chat as well as information during the last school year with regard to the project.

**Why are we doing the Campus Expansion?**

- Both projects, the expansion of the Lower School and reinstating our boarding program came out of the strategic planning process. Our strategic plan "[Together As One](#)" reaffirms our commitment to "inspiring with exceptional spaces" and creating "meaningful, sustainable and reciprocal global relationships," to offer our students a more globally connected educational experience.

**What are the Campus Expansion project basics?**

- The school will begin constructing seven buildings for the Lower School in 2017. A new **K-1 Community**, will be ten new classrooms in five buildings centered around a natural playground. Two additional buildings, the **Lower School Labs and Studios**, will serve the entire Lower School. These buildings will include new science labs, a maker space and technology center, religion classroom, and reading center as well as dance and music studios.
- Second, the school will be constructing a **dorm for the Upper School** where local, domestic and international students in grades 9-12 will live on campus.
- These new buildings will allow 'Iolani to accept an additional section of kindergarten, 24 more students, and also reduce class sizes (to 12:1 in K and 16:1 in First) in our K-1 program. **Over the K-12 span of the school, this represents an increased enrollment of 312 local students.**
- In the first year of the boarding program (2018-2019), the Upper School student population will increase by up to 84 (28 students per grades 9, 10 and 11) and the following year it will grow by another 28 students (grades 9, 10, 11 and 12) to its full capacity of 112 students. Boarding students will be "in addition" to regular acceptance totals at the high school entry points. These students will not be taking spaces away from other applicants. Boarding students must also be proficient in the English language and pass the same entry exams and protocol as other students.

**Will increasing the number of students expand class sizes or the student-to-teacher ratio?**

- No. Maintaining small class sizes and a low student-teacher ratio is an important commitment by the board, school and faculty. Our student-centered approach toward learning promises that at 'Iolani, "you are known." Our already low student-to-teacher ratios will actually decrease further with these initiatives.

**Will constructing new facilities increase day school tuition?**

- No. Tuition increases will occur as they normally do but will not be related to any of the projects we are undertaking. The Board of Governors has made this commitment.

**Will endowment funds be used to pay for the dormitory and Lower School improvements?**

- No. Endowment funds may not be spent on any of the projects. The endowment may be used to secure financing, if necessary. The Board of Governors has made this commitment.

**Will expanding the number of students admitted at kindergarten and adding new on and off-island boarding students to the Upper School, reduce financial aid offerings?**

- No. The school will continue to increase available financial aid as it historically has with increases to account for a larger student population.

**What effect will the Lower School developments and the addition of a boarding program have on the academic, social and cultural environment on campus?**

- The changes we are implementing will enhance programmatic excellence as we realize the goals of the Strategic Plan. Our expanded course catalog with the opening of the Sullivan Center for Innovation and Leadership created this kind of academic space in the Upper School. Developing the Date Laau property creates the physical space for an increased student body. We will build it all upon our One Team philosophy—and all new students, day or boarding, will be embraced.

**When will the new facilities be available?**

- The current target date for the K-1 Community and Dorm is the 2018-2019 school year. The Lower School Labs and Studios will be constructed the year following the completion of the K-1 Community.

Thank you for your support and attention. I hope to see many of you at the Parent Coffee Chats. Homecoming week has been fantastic and our campus is abuzz with red, black and white school spirit. Go Raiders!

Mahalo,

Tim

--

Timothy R. Cottrell, PhD  
Head of School  
'Iolani School  
(m) [808-222-2027](tel:808-222-2027)

This communication may contain information that may be confidential, privileged and/or prohibited from disclosure. Except for personal use by the intended recipient, or as expressly authorized by the sender, any person who receives this information is prohibited from disclosing, copying, distributing, and/or using it. If you have received this communication in error, please immediately delete it and all copies, and promptly notify the sender. Nothing in this communication is intended to operate as an electronic signature under applicable law.