



2023-24 REPORT TO COLLEGES



'IOLANI SCHOOL

Founded in 1863, at the request of King Kamehameha IV and Queen Emma, 'Iolani has grown to become an internationally recognized independent, college-preparatory day and boarding school in Honolulu, Hawai'i related historically to the Episcopal Church.

Timothy R. Cottrell, Ph.D.
Head of School

Aster Chin, Ph.D.
Dean of Upper School

Michael Lomuscio, Ed.D.
Dean of Studies

Lori Yoneda
Dean of Students

Piyada A. Nonzee
Executive Director of College Counseling
pnonzee@iolani.org

Todd R. Fleming
Director of College Counseling Operations
tfleming@iolani.org

Leilani Arita-Takayama
Associate Director
ltakayama@iolani.org

Scott Kominkiewicz
Associate Director
skominkiewicz@iolani.org

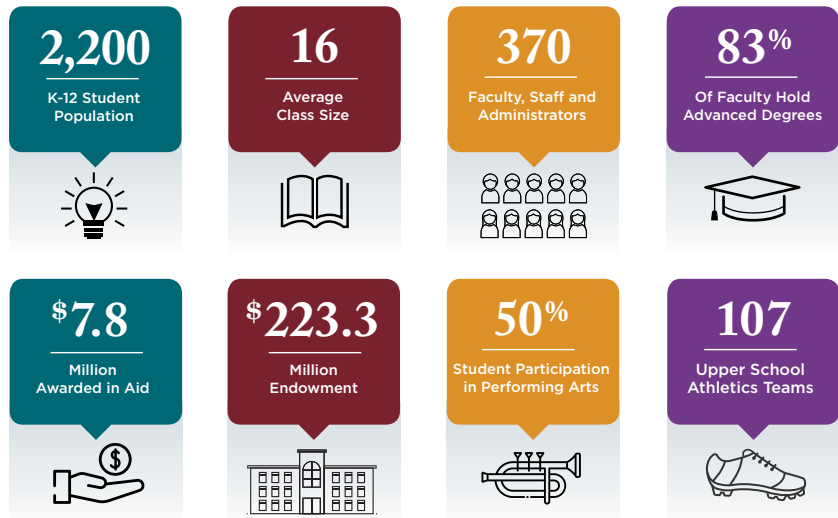
Berta Liao
Associate Director
bliao@iolani.org

Kori Shlachter
Associate Director
kshlachter@iolani.org

MISSION

'Iolani School is a college-preparatory school for grades K-12 founded upon Christian principles. Its mission is to develop liberally educated, well-rounded individuals who are well prepared for higher education and for responsible, moral citizenship.

SCHOOL AND COMMUNITY



- Accredited by the Western Association of Schools and Colleges

MARKING PROCEDURES

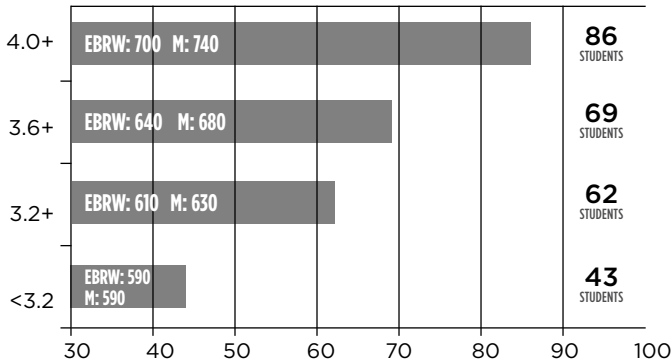
Numerical	Letter	Regular	Honors	A.P.
90-100	A	4.0	4.5	5.0
80-89	B	3.0	3.5	4.0
70-79	C	2.0	2.0	2.0
60-69	D	1.0	1.0	1.0
Below	E	0	0	0

GPA is calculated by converting to total points and dividing by total credits. As a school policy, 'Iolani does not provide numeric class rank.



Class of 2024 Profile: 259 Students

WEIGHTED GPA (Six Semesters) Distribution - Class of 2024
 - Mean SATs for each cohort listed within the bar



NATIONAL MERIT SCHOLARSHIP COMPETITION

18 National Merit Semifinalists
 Out of a total of 57 in the State of Hawai'i

36 National Merit Commended Scholars

ADVANCED PLACEMENT PERFORMANCE

In 2023, 1,154 AP Examinations were written with:

- 39% earning scores of 5
- 70% earning scores of 4 or 5
- 92% earning passing scores of 3, 4, or 5

PRESIDENTIAL SCHOLARS PROGRAM

In the last six years, 'Iolani School has had:

78
Candidates

12
Semifinalists

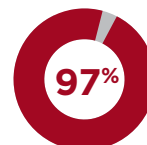
6
Presidential Scholars



AP ENROLLMENT 2023-24

With the exception of Computer Science and U.S. History, junior year is the first year in which students may take AP courses. The enrollment below includes seniors, juniors, and sophomores.

African American Studies	33
Biology	28
Calculus AB	103
Calculus BC	49
Calculus Multivariable	14
Capstone Seminar	12
Capstone Research	8
Chemistry	42
Chinese Lang	22
CompSci	73
English Lit	33
French	10
Government & Politics: Comparative	30
Government & Politics: US	87
Japanese	20
Latin	12
Macroeconomics	78
Microeconomics	78
Physics 1	80
Physics 2	27
Physics C E&M	12
Physics C Mech	12
Psychology	150
Spanish	9
Stats	71
Studio Art: 3D Art & Design	11
Studio Art: Drawing	5
US History	112
TOTAL:	1,221



In the Class of 2024, **250 SENIORS OR 97% OF THE CLASS** are taking one or more AP classes.

'IOLANI SCHOOL COURSE OFFERINGS FOR THE CLASS OF 2024

	GRADE 9	GRADE 10	GRADE 11	GRADE 12
English (4 years required)	English 9	English 10	11th Grade Year Elective: British Literary Experience Semester Electives open to all in Grades 11 and 12. Full list of English Department electives can be found at: www.iolani.org/academics Year Electives open to all in Grades 11 and 12: AP African American Studies AP Seminar	AP English Literature
History (3 years required)	History of the Modern World	United States History AP United States History	Semester Electives open to all in Grades 11 and 12. Full list of History Department electives can be found at: www.iolani.org/academics Year Electives open to all in Grades 11 and 12: Asian Studies AP US Gov't & Politics AP African American Studies AP Micro/Macro Economics AP European History	
Mathematics (3 years required, through Algebra 2)	Algebra 1A, 1B, 1C Geometry Algebra 2A Geometry Honors	Geometry, Algebra 2A Algebra 2B, Trigonometry Algebra 2 Honors	Algebra 2B, Trigonometry, Precalculus, Precalculus Honors <i>Other math electives, Algebra 2 as pre-requisite:</i> Statistics, Design Science, Economics of Personal Finance, AP Statistics, Multivariable Calculus	Accelerated Precalculus, Calculus, AP Calculus AB, AP Calculus BC
Laboratory Science (3 years required)	Biology Biology Honors	Biology Chemistry Chemistry Honors	Chemistry Chemistry Honors Physics AP Biology AP Chemistry AP Physics 1 Semester Electives open to all in Grades 11 and 12: Full list of Science Department electives can be found at: www.iolani.org/academics	AP Physics 2 AP Physics C: Electricity and Magnetism AP Physics C: Mechanics
World Language (3 years required)	<i>Students may begin language study in grade 7, 8, 9 or 10. The following courses are offered to those in 9-12.</i> Chinese (Levels 1-5 Honors and AP Chinese Language), French (Levels 1-5 Honors and AP French Language), Hawaiian (Levels 1-4, 5 Honors), Japanese (Levels 1-5 Honors and AP Japanese Language), Latin (Levels 1-3 Honors and AP Latin), Spanish (Levels 1-4 Honors, AP Spanish Language and AP Spanish Literature)			
Visual Arts	Students may begin art study in any grade. The following courses are offered to those in grades 9-12. Ceramics 1-3, Design 3D 1-3, Drawing 1-3, Mixed Media 1-3, Painting 1-3, Photography 1-3, AP Studio Art: Drawing, AP Studio Art: 3D Design			
Performing Arts	Students may begin performing arts study in any grade. The following courses are offered to those in grades 9-12. Chorus 1-2, Concert Band (Beginning, Intermediate, Marching, Concert, Symphonic, Wind Ensemble), Stage Band 1-3, Orchestra 1-5, Dance Jazz/Ballet 1-4, Dance Hula 1-4, Theater (Beginning, Int., Advanced), Musical Theatre 1-3, Music Theory, Song Writing, Hawaiian Music Ensemble			
i (Innovation) Department	Computer Science: AP Computer Science Principles, Computer 1, Intro to Data Science, App Design & Development, Video Game Design 1-2 Design & Fabrication: Intro to Digital Design & Fabrication, Design & Fabrication 1-3 Media: Film Production, Graphic Design, Newsroom, Yearbook Robotics: Robotics 1-3, Advanced Robotics; Leadership & Service Learning: Economics & Entrepreneurship, One Mile: Climate Change, Sustainable Earth: Population & Energy			
Other	Religion: Bible (one semester required of all students), Ethics: Self, School, and Society Physical Education: One quarter required in grade 9, two quarters each in grades 10 and 11 Extra-departmental: Psychology, AP Psychology AP Capstone: AP Research, AP Seminar			

COLLEGE ATTENDANCE: FOUR YEAR HISTORY

Members of the Class of 2023 have enrolled at 127 colleges around the world. Over 99% are attending four-year colleges. 84% attend college in the continental U.S., 7% in other countries, and 9% in Hawai'i. The following is a list of schools with two or more matriculants from the 'Iolani Classes of 2020-2023. Schools in bold and red have enrolled 4 or more students in that time, while schools marked with an asterisk note graduates from the Class of 2023.

American University*
Amherst College*
Arizona State University*
Azusa Pacific University*
Bard College*
Barnard College*
Baylor University*
Bentley University*
Berklee College of Music
Biola University*
Boise State University*
Boston College
Boston University*
Bowdoin College*
Brandeis University
Brigham Young University*
Brown University*
Bryn Mawr College*
California Baptist University*
California Lutheran University*
California Polytechnic State University (San Luis Obispo)
California State Polytechnic University, Pomona*
California State University, East Bay*
California State University, Fullerton*
California State University, Maritime Academy
California State University, Northridge*
Carnegie Mellon University
Case Western Reserve University*
Chaminade University of Honolulu*
Chapman University*
Claremont McKenna College*
Clemson University*
Colorado College*
Colorado State University*
Cornell University*
Creighton University*
Denison University
Duke University*
Eastern Washington University*
Embry-Riddle Aeronautical University, Prescott*
Emerson College
Emory University*
Fordham University*
George Fox University*
George Washington University*
Georgetown University*
Gonzaga University*
Grand Canyon University
Grinnell College*
Harvard University*
Harvey Mudd College
Haverford College*
Hawai'i Pacific University
IE University*
Indiana University*
International Christian University
Keio University*
La Sierra University*
Lafayette College*
Lehigh University*
Lewis & Clark College*
Long Island University, Post*
Loyola Marymount University*
Loyola University Chicago*
Macalester College*
Marist College*
Massachusetts Institute of Technology*
McGill University
Menlo College
Michigan State University*
New York University*
Northeastern University*
Northwestern University*
Oberlin College
Occidental College*
Oregon State University*
Pace University*
Pacific Lutheran University Pacific University*
Parsons School of Design at The New School
Penn State University*
Pepperdine University*
Pitzer College
Point Loma Nazarene University*
Pomona College*
Portland State University*
Princeton University
Purdue University*
Reed College*
Rice University*
Rochester Institute of Technology*
Rutgers University*
Sacred Heart University*
Saint Edward's University*
Saint Louis University
Saint Martin's University*
San Diego State University*
San Jose State University*
Santa Clara University*
Sarah Lawrence College
Sciences Po Paris*
Scripps College*
Seattle Pacific University*
Seattle University*
Seton Hall University*
Sophia University*
St. Olaf College*
Stanford University
Stevens Institute of Technology
Stony Brook University*
Swarthmore College*
Syracuse University*
Temple University
Temple University, Japan Campus*
Texas Tech University*
Tufts University*
Tulane University of Louisiana*
Union College*
United States Air Force Academy
United States Military Academy at West Point
United States Naval Academy
University of Arizona
University of British Columbia*
University of California, Berkeley
University of California, Davis*
University of California, Irvine*
University of California, Los Angeles*
University of California, San Diego
University of Denver*
University of Edinburgh, The*
University of Hawaii at Hilo*
University of Hawaii at Manoa*
University of Health Sciences & Pharmacy*
University of Illinois at Urbana-Champaign*
University of La Verne
University of Louisville*
University of Michigan*
University of Nevada, Las Vegas
University of Nevada, Reno
University of Notre Dame
University of Oregon*
University of Pennsylvania*
University of Pittsburgh
University of Portland*
University of Puget Sound*
University of Redlands
University of Rochester
University of San Diego*
University of San Francisco*
University of Southern California*
University of the Pacific
University of Texas at Arlington, The*
University of Toledo*
University of Toronto
University of Utah*
University of Washington*
University of Wisconsin, Madison*
Utah Valley University*
Vanderbilt University
Vassar College
Waseda University*
Washington State University
Washington University in St. Louis*
Wellesley College*
Westcliff University*
Willamette University*
Worcester Polytechnic Institute
Yale University*